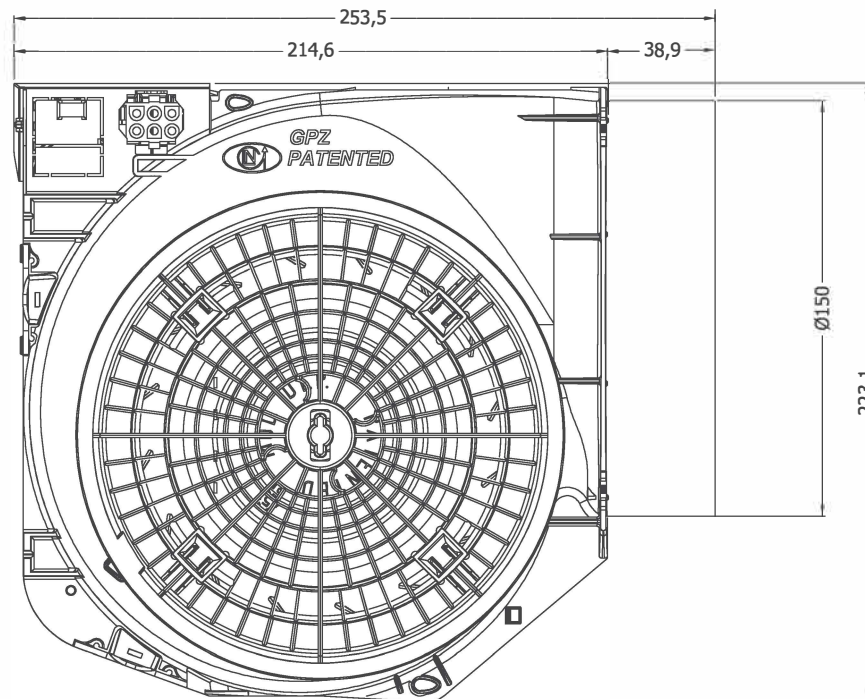
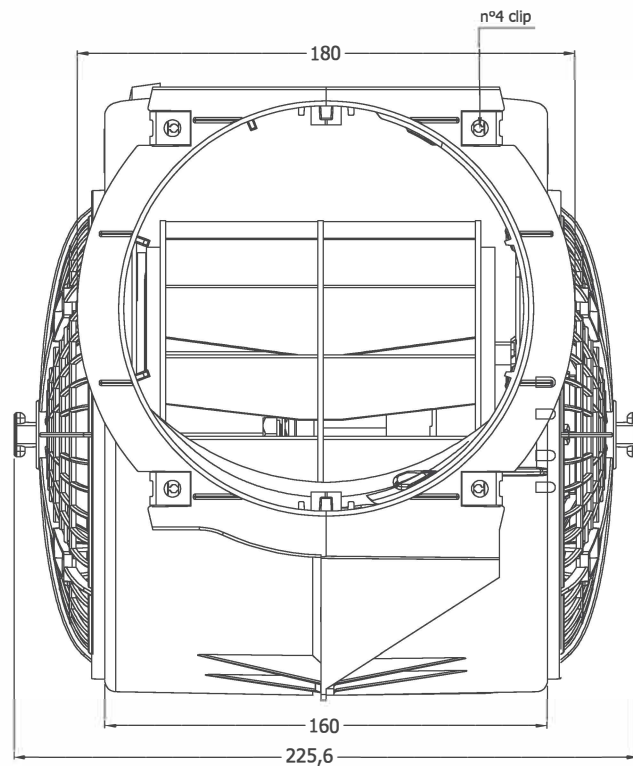
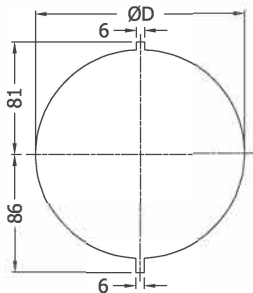
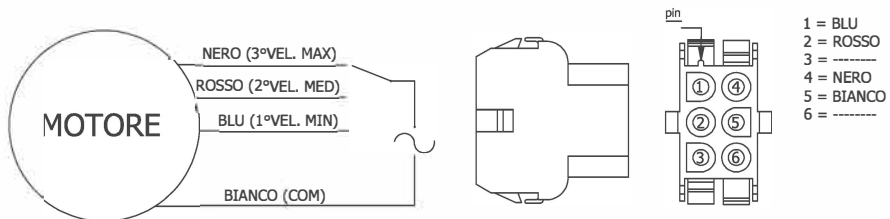


SCHEMA TAGLIO LAMIERA CAPPA
E TABELLA DIMENSIONI (mm)

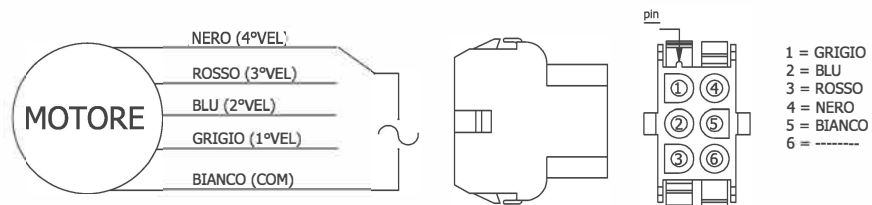
SPESSORE	ØD
0,8-1	152,2
1,2	153,5
1,5	155,2



SCHEMA DI COLLEGAMENTO GPz500



SCHEMA DI COLLEGAMENTO GPz550



PRODUCT TECHNICAL DATA



SIT Group

MOD.	REV.: 0	DATE:	CUSTOMER:	Project N°
FAN TYPE: PLASTIC BLOWER			PROJECT CODE:	GPz500

DATA SHEET

ACCORDING TO	EN60335-1, EN61591, EN60704-3, EN60704-2-13	
MOTOR TYPE:	2 SHADED POLES	
VOLTAGE / FREQUENCY	V / Hz	220-240 / 50
NOMINAL POWER	W	110
INSULATION CLASS		F
PROTECTION CLASS		II
THERMALLY PROTECTED	°C	130
MAX ADMISSIBLE ΔT MOTOR	°C	115
MAX T OF OPERATING TIME AT LOCKED ROTOR	°C	190
ADMISSIBLE AMBIENT TEMPERATURE	°C	40
WORKING POSITION		HORIZONTAL
UTILIZE TIME		CONTINUOUS
VOLTAGE TAKE-OFF	V	150
ROTATION (SIDE EXIT SHAFT)		CW
CAPACITOR	μF / VDB	/
PROBE		/
ELECTRICAL INTERFACE (connector,input,output)		Connector universal

SPEED/CONNECTION WINDINGS

COMMON (N)	INTENSIVE	MAX	INTERMED	MIN		
WHITE	-	BLACK	RED	BLUE		

PERFORMANCE AT 230V IN FREE AIR

SPEED	R(Ω) ±10% at 20°C	I(A) ±10%	P(W) ±10%	RPM ±80	Q max (M³/h) ±5%	P max (Pa) ±5%	Q IEC150 (M³/h) ±5%	Lw [dB(A)re 1pW] ±1	Lp [dB(A)re 20 μPa] ±1
INTENSIVE				2200	500	240	450	68.8	58.5
MED				1600	400	200	360	62.5	51
MIN				1200	300	170	290	54.9	44

NOTES:

ANNEXED DOCUMENTATION

DRAWING

R&D LN2

COMPILED: ANTINORI	APPROVED: CAVINA
--------------------	------------------

CUSTOMER APPROVAL

APPROVAL SIGNATURE BY THE CUSTOMER:

N.B. LN2 is not responsible about working anomalies due to not appropriate use according to what specified on this document. For the final use of the product, customer must verify that it doesn't cause an alteration to the reference data of normative I.E.C.

PRODUCT TECHNICAL DATA



SIT Group

MOD.	REV.: 0	DATE:	CUSTOMER:	Project N°
FAN TYPE: PLASTIC BLOWER			PROJECT CODE:	GPz550

DATA SHEET

ACCORDING TO	EN60335-1, EN61591, EN60704-3, EN60704-2-13	
MOTOR TYPE:	2 SHADED POLES	
VOLTAGE / FREQUENCY	V / Hz	220-240 / 50
NOMINAL POWER	W	140
INSULATION CLASS		F
PROTECTION CLASS		II
THERMALLY PROTECTED	°C	130
MAX ADMISSIBLE ΔT MOTOR	°C	115
MAX T OF OPERATING TIME AT LOCKED ROTOR	°C	190
ADMISSIBLE AMBIENT TEMPERATURE	°C	40
WORKING POSITION		HORIZONTAL
UTILIZE TIME		CONTINUOUS
VOLTAGE TAKE-OFF	V	150
ROTATION (SIDE EXIT SHAFT)		CW
CAPACITOR	μF / VDB	/
PROBE		/
ELECTRICAL INTERFACE (connector,input,output)		Connector universal

SPEED/CONNECTION WINDINGS

COMMON (N)	INTENSIVE	MAX	INTERMED	MIN		
WHITE	BLACK	RED	BLUE	GREY		

PERFORMANCE AT 230V IN FREE AIR

SPEED	R(Ω) ±10% at 20°C	I(A) ±10%	P(W) ±10%	RPM ±80	Q max (M³/h) ±5%	P max (Pa) ±5%	Q IEC150 (M³/h) ±5%	Lw [dB(A)re 1pW] ±1	Lp [dB(A)re 20 μPa] ±1
MAX				2400	560	250	510	72.7	62.9
3				2050	480	230	440	69.1	56.5
2				1650	370	200	340	56.6	49.9
MIN				1300	290	180	270	53.1	44.9

NOTES:

ANNEXED DOCUMENTATION

--

R&D LN2

COMPILED: ANTINORI	APPROVED: CAVINA
--------------------	------------------

CUSTOMER APPROVAL

APPROVAL SIGNATURE BY THE CUSTOMER:

N.B. LN2 is not responsible about working anomalies due to not appropriate use according to what specified on this document. For the final use of the product, customer must verify that it doesn't cause an alteration to the reference data of normative I.E.C.